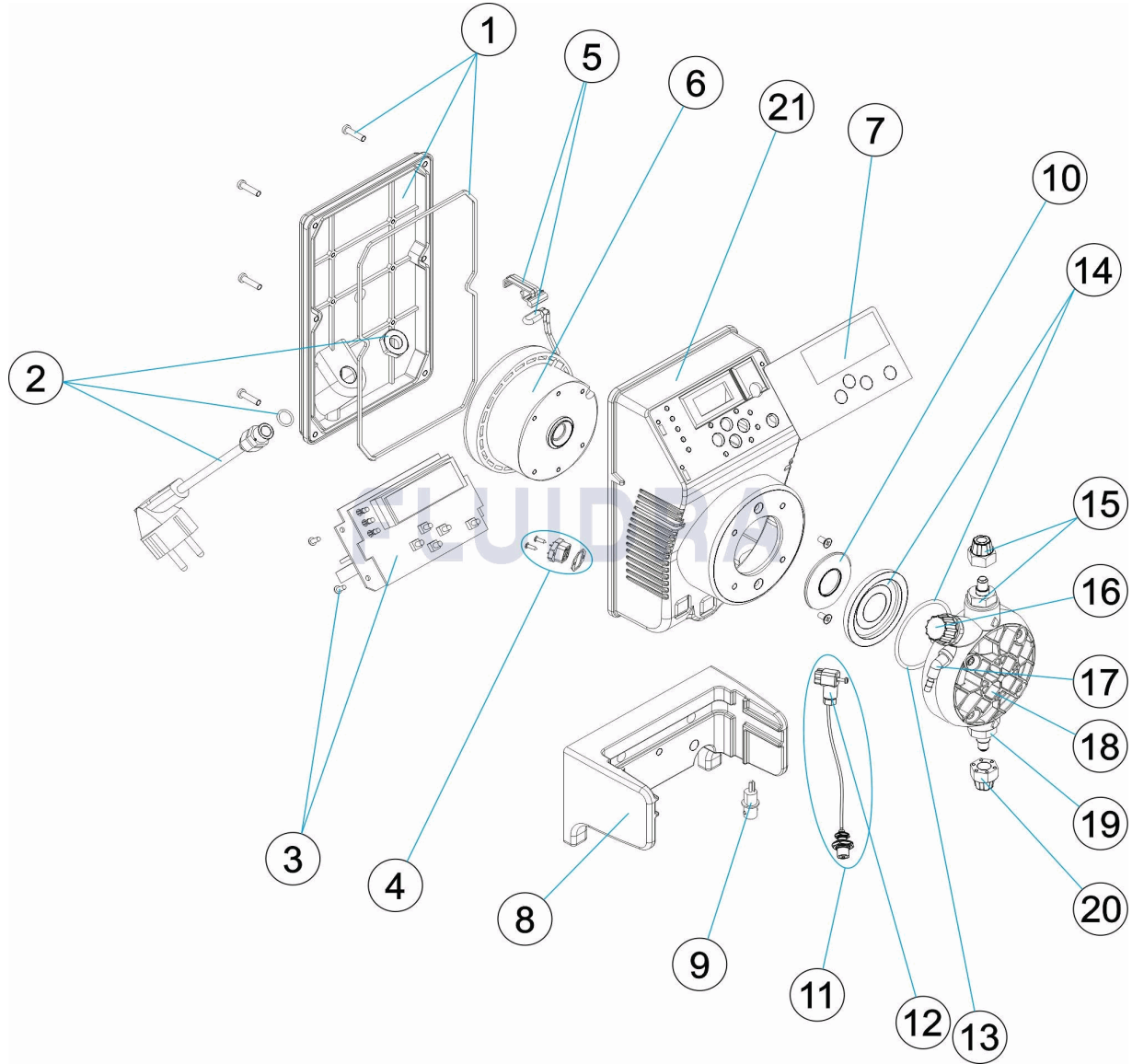


CODIGO **57168, 57169, 57170, 57892, 57893, 57894**

DESCRIPCION: **BOMBA EXACTUS PH-RX/M**



ESPAÑOL

POS	CODIGO	DESCRIPCION	CANTIDAD	POS	CODIGO	DESCRIPCION	CANTIDAD
1	4408030025	TAPA POSTERIOR EXACTUS CON JUNTA		12	* 4408031729	CONECTOR DE NIVEL	
2	4408031221	CABLE ALIMENTACION		13	4408030111	JUNTA TORICA CABEZAL	
3	4408032602	CIRCUITO ELECTRONICO PH/RX. 230/240V		14	4408030119	MEMBRANA COMPLETA	
4	* 4408031217	CONECTOR		15	4408030112	CUERPO RACORD + DUTRAL	
5	4408032305	SOPORTE MAS TERMOSTADO 110°		15	4408030113	CUERPO RACORD + VITON	
6	* 4408030118	ELECTROIMAN COMPLETO 5L 7KG		15	4408030114	CUERPO RACORD + SILICONA	
6	* 4408031114	ELECTROIMAN 5L 10KG		16	4408032308	TAPON PURGA CABEZAL CP STD	
6	* 4408030517	ELECTROIMAN 10L 5KG		17	4408031203	RACOR PURGA CABEZAL	
7	4408030028	PANEL TACTIL EXACTUS PH-RX/M		18	4408031205	CABEZAL COMPLETO	
8	4408032303	SOPORTE EXACTUS 2009		19	4408030115	VALVULA DUTRAL + SOPORTE	
9	4408032603	CONECTOR HEMBRA BNC EXACTUS 2009		19	4408030116	VALVULA VITON + SOPORTE	
10	* 4408030531	ARANDELA PISTON 5L 7KG		19	4408030117	VALVULA SILICONA + SOPORTE	
10	* 4408031119	ARANDELA PISTON 2L 5KG - 2L 10KG - 5L 1		20	4408030126	TUERCA SUJECCION TUBO	

*** NOTA OBSERVACIONES**

CODIGO 57168, 57169, 57170, 57892, 57893, 57894

DESCRIPCION: BOMBA EXACTUS PH-RX/M

10	* 4408031121	ARANDELA PISTON 10L 5KG	21	57174R0001	CAJA EXACTUS
11	* 4408030062	SONDA DE NIVEL MA/MB			

CODIGO 57168, 57169, 57170, 57892, 57893, 57894

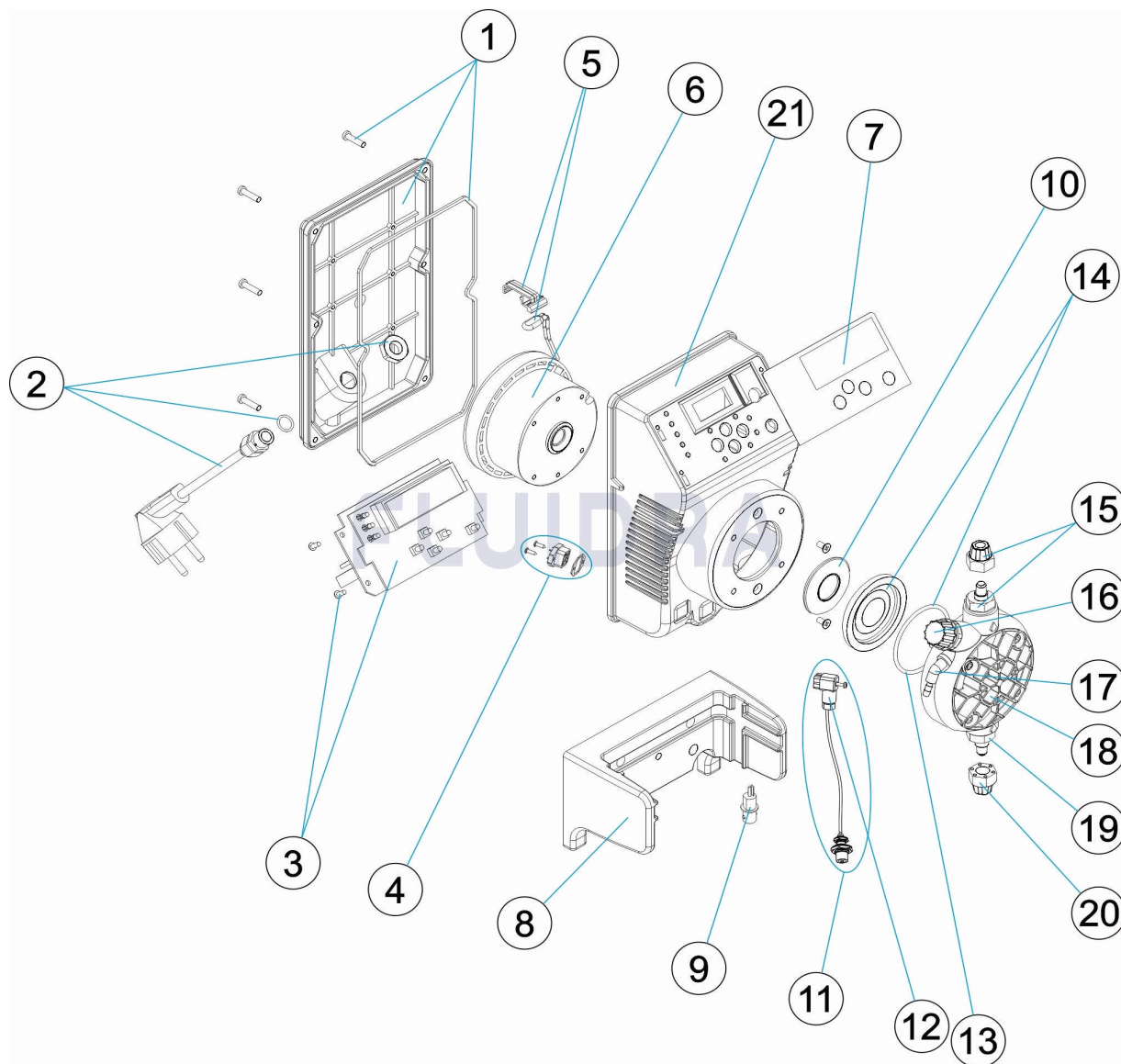
DESCRIPCION: BOMBA EXACTUS PH-RX/M

OBSERVACIONES

POS	CODIGO	OBSERVACIONES
4	* 4408031217	PARA: 57892, 57893, 57894
6	* 4408030118	PARA: 57168, 57892
6	* 4408031114	PARA: 57169, 57893
6	* 4408030517	PARA: 57170, 57894
10	* 4408030531	PARA: 57168, 57892
10	* 4408031119	PARA: 57169, 57893
10	* 4408031121	PARA: 57170, 57894
11	* 4408030062	PARA: 57892, 57893, 57894
12	* 4408031729	PARA: 57892, 57893, 57894

CODE 57168, 57169, 57170, 57892, 57893, 57894

DESCRIPTION: POMPE EXACTUS PH-RX/M



FRANCAIS

POS	CODE	DESCRIPTION	QUANTITE	POS	CODE	DESCRIPTION	QUANTITE
1	4408030025	COUVERCLE POMPE EXACTUS		12	* 4408031729	CONECTEUR DE NIVEAU	
2	4408031221	CABLE ALIMENTATION		13	4408030111	JOINT TORIQUE TETE	
3	4408032602	CIRCUIT ELECTRONIQUE PH/RX. 2009		14	4408030119	MEMBRANE COMPLETE	
4	* 4408031217	CONNECTEUR		15	4408030112	CORPS RACCORD + CLAPET DUTRAL	
5	4408032305	SUPPORT + THERMOSTAT DE 110 °		15	4408030113	CORPS RACCORD + CLAPET VITON	
6	* 4408030118	ELECTROAIMANT COMPLETO 5L 7KG		15	4408030114	CORPS RACCORD + CLAPET SILICONE	
6	* 4408031114	ELECTROAIMANT 5L 10KG		16	4408032308	BOUCHON PURGE	
6	* 4408030517	ELECTROAIMANT 10L 5KG		17	4408031203	RACCOR PURGE	
7	4408030028	TABEAU DE CONTROLE TACTILE PH-RX/M		18	4408031205	TETE COMPLET	
8	4408032303	SUPPORT DE POMPE EXACTUS 2009		19	4408030115	CLAPET DUTRAL + SUPPORT	
9	4408032603	CONNEXION FEMELLE BCN EXACTUS 200		19	4408030116	CLAPET VITON + SUPPORT	
10	* 4408030531	RONDELLE PISTON 5L 7KG		19	4408030117	CLAPET SILICONA + SUPPORT	
10	* 4408031119	RONDELLE PISTON 2L 5KG - 2L 10KG - 5L		20	4408030126	ECROU DE TUBE D'ASPIRATION	

CODE **57168, 57169, 57170, 57892, 57893, 57894**

DESCRIPTION: **POMPE EXACTUS PH-RX/M**

10	* 4408031121	RONDELLE PISTON 10L 5KG	21	57174R0001	BOITIER DE POMPE EXACTUS
11	* 4408030062	SONDE DE NIVEAU MAMB			

CODE **57168, 57169, 57170, 57892, 57893, 57894**

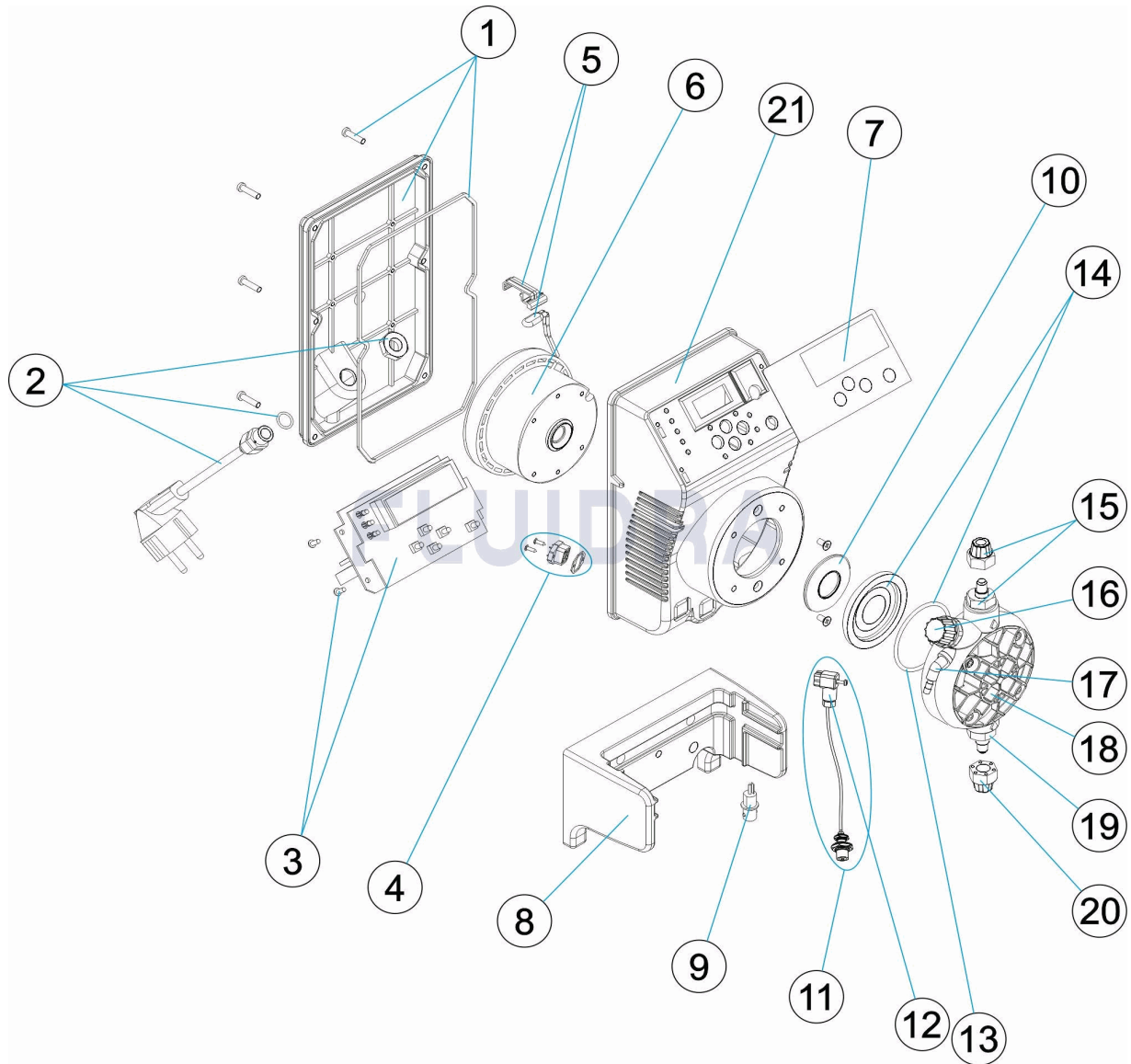
DESCRIPTION: **POMPE EXACTUS PH-RX/M**

OBSERVATIONS

POS	CODE	OBSERVATIONS
4	* 4408031217	POUR: 57892, 57893, 57894
6	* 4408030118	POUR: 57168, 57892
6	* 4408031114	POUR: 57169, 57893
6	* 4408030517	POUR: 57170, 57894
10	* 4408030531	POUR: 57168, 57892
10	* 4408031119	POUR: 57169, 57893
10	* 4408031121	POUR: 57170, 57894
11	* 4408030062	POUR: 57892, 57893, 57894
12	* 4408031729	POUR: 57892, 57893, 57894

CODE 57168, 57169, 57170, 57892, 57893, 57894

DESCRIPTION: EXACTUS PUMP PH-RX/M



ENGLISH

POS	CODE	DESCRIPTION	QUANTITY	POS	CODE	DESCRIPTION	QUANTITY
1	4408030025	PUMP REAR COVER		12	* 4408031729	FEMALE CONNECTOR BCN	
2	4408031221	SUPPLY CABLE		13	4408030111	HEAD O RING	
3	4408032602	ELECTRONIC CIRCUIT PH/RX 2009		14	4408030119	DIAPHRAM COMPLETE	
4	* 4408031217	CONNECTOR		15	4408030112	HEAD CONNECTOR BODY + DUTRAL	
5	4408032305	SUPPORT AND THERMOSTAT 110°		15	4408030113	HEAD CONNECTOR BODY + VITON	
6	* 4408030118	ELECTROMAGNET ASSEMBLY COMPLETE		15	4408030114	HEAD CONNECTOR BODY + SILICON	
6	* 4408031114	ELECTROMAGNET 5L 10KG		16	4408032308	DRAIN PLUG	
6	* 4408030517	ELECTROMAGNET 10L 5KG		17	4408031203	PURGE FITTING	
7	4408030028	TOUCH SCREEN PANEL PH-RX/M		18	4408031205	COMPLETE HEAD ASSEMBLY	
8	4408032303	PUMP SUPPORT 2009		19	4408030115	DUTRAL VALVE + SUPPORT	
9	4408032603	FEMALE CONNECTOR BCN EXACTUS 2009		19	4408030116	VITON VALVE + SUPPORT	
10	* 4408030531	PISTON WASHER 5L 7KG		19	4408030117	SILICON VALVE + SUPPORT	
10	* 4408031119	PISTON WASHER 2L 5KG - 2L 10KG - 5L 10l		20	4408030126	SUCTION TUBE NUT	

* SEE OBSERVATIONS SHEET

CODE **57168, 57169, 57170, 57892, 57893, 57894**

DESCRIPTION: **EXACTUS PUMP PH-RX/M**

10	* 4408031121	PISTON WASHER 10L 5KG	21	57174R0001	EXACTUS PUMP BOX
11	* 4408030062	LEVEL PROBE MA/MB			

CODE **57168, 57169, 57170, 57892, 57893, 57894**

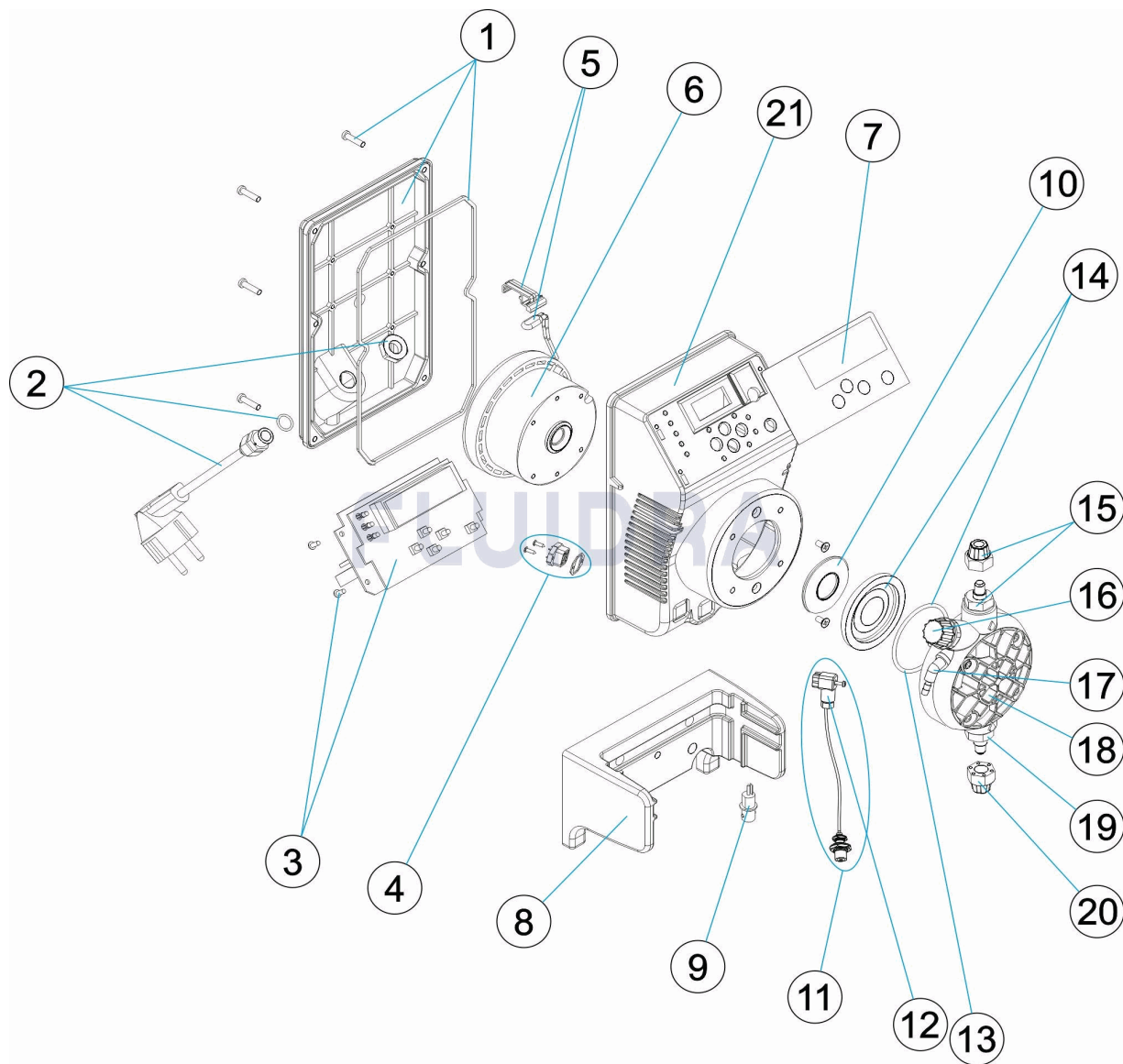
DESCRIPTION: **EXACTUS PUMP PH-RX/M**

OBSERVATIONS

POS	CODE	OBSERVATIONS
4	* 4408031217	FOR: 57892, 57893, 57894
6	* 4408030118	FOR: 57168, 57892
6	* 4408031114	FOR: 57169, 57893
6	* 4408030517	FOR: 57170, 57894
10	* 4408030531	FOR: 57168, 57892
10	* 4408031119	FOR: 57169, 57893
10	* 4408031121	FOR: 57170, 57894
11	* 4408030062	FOR: 57892, 57893, 57894
12	* 4408031729	FOR: 57892, 57893, 57894

CODICE 57168, 57169, 57170, 57892, 57893, 57894

DESCRIZIONE: POMPA EXACTUS PH-RX/M



ITALIANO

POS	CODICE	DESCRIZIONE	QUANTITA'	POS	CODICE	DESCRIZIONE	QUANTITA'
1	4408030025	COPRIVENTOLA POMPA EXACTUS		12	* 4408031729	CONNETTORE DI LIVELLO	
2	4408031221	CAVO DI ALIMENTAZIONE		13	4408030111	O-RING PER TESTA	
3	4408032602	CIRCUITO ELETTRONICO PH/RX. 2009		14	4408030119	MEMBRANA COMPLETA	
4	* 4408031217	CONNETTORE		15	4408030112	CORPO RACCORDO + VALVOLA IN DUTRAL	
5	4408032305	SUPPORTO + TERMOSTATO 110°		15	4408030113	CORPO RACCORDO + VALVOLA IN VITON	
6	* 4408030118	ELETTROCALAMITA COMPLETA 5L 7KG		15	4408030114	CORPO RACCORDO + VALVOLA IN SILICON	
6	* 4408031114	ELETTROCALAMITA 5L 10KG		16	4408032308	TAPPO SPURGO	
6	* 4408030517	ELETTROCALAMITA 10L 5KG		17	4408031203	RACORDO SCARIO	
7	4408030028	PANNELLO DIGITALE PH-RX/M		18	4408031205	TESTA COMPLETA	
8	4408032303	SUPPORTO POMPA EXACTUS 2009		19	4408030115	VALVOLA DUTRAL + SUPPORTO	
9	4408032603	CONNETTORE FEMMINA BCN EXACTUS 2(19	4408030116	VALVOLA + SUPPORTO	
10	* 4408030531	RONDELLA PISTONE 5L 7KG		19	4408030117	VALVOLA SILICONE + SUPPORTO	
10	* 4408031119	RONDELLA PISTONE 2L 5KG - 2L 10KG - 5L		20	4408030126	GHIERA FISSAGGIO TUBO	

*** SI FACCIA RIFERIMENTO AL FOGLIO DELLE OSSERVAZIONI**

CODICE 57168, 57169, 57170, 57892, 57893, 57894

DESCRIZIONE: POMPA EXACTUS PH-RX/M

10	* 4408031121	RONDELLA PISTONE 10L 5KG	21	57174R0001	CASSA POMPA EXACTUS
11	* 4408030062	SONDA DI LIVELLO MA/MB			

CODICE **57168, 57169, 57170, 57892, 57893, 57894**

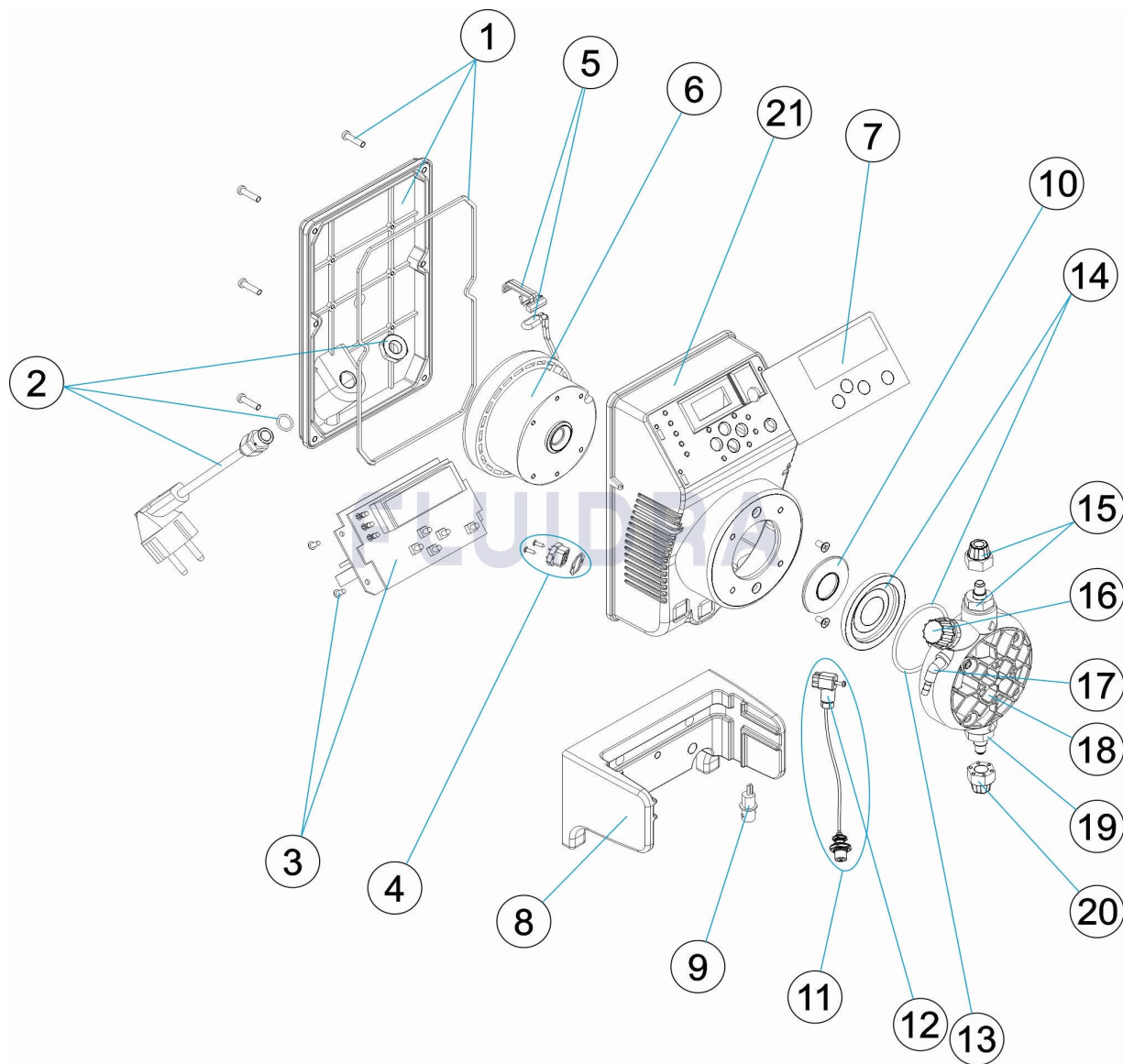
DESCRIZIONE: POMPA EXACTUS PH-RX/M

OSSERVAZIONI

POS	CODICE	OSSERVAZIONI
4	* 4408031217	PER: 57892, 57893, 57894
6	* 4408030118	PER: 57168, 57892
6	* 4408031114	PER: 57169, 57893
6	* 4408030517	PER: 57170, 57894
10	* 4408030531	PER: 57168, 57892
10	* 4408031119	PER: 57169, 57893
10	* 4408031121	PER: 57170, 57894
11	* 4408030062	PER: 57892, 57893, 57894
12	* 4408031729	PER: 57892, 57893, 57894

CODE 57168, 57169, 57170, 57892, 57893, 57894

BESCHREIBUNG: PUMPE EXACTUS PH-RX/M



DEUTSCH

POS	CODE	BESCHREIBUNG	MENGE	POS	CODE	BESCHREIBUNG	MENGE
1	4408030025	ABDECKUNG HINTEN EXACTUS UND DICHT		12	* 4408031729	VERBINDUNGSTÜCK FÜLLSTAND	
2	4408031221	VERSORGUNGSKABEL		13	4408030111	O-RING KOPFSTÜCK	
3	4408032602	PLATINE SCHALTKEIS PH/RX. 230/240 V		14	4408030119	KOMPLETTMEMBERAN	
4	* 4408031217	STECKKUPPLUNG		15	4408030112	VENTILSATZ MIT DUTRAL	
5	4408032305	HALTERUNG UND TERMOSTAT 110°		15	4408030113	VENTILSATZ MIT VITON	
6	* 4408030118	ELEKTROMAGNET KOMPLETT 5 L 7 KG		15	4408030114	VENTILSATZ MIT SILIKON	
6	* 4408031114	ELEKTROMAGNET 5 L 10 KG		16	4408032308	ABLASSSTOPFEN KOPFSTÜCK CP STD	
6	* 4408030517	ELEKTROMAGNET 10 L 5 KG		17	4408031203	GEWINDE ABLASS KOPFSTÜCK	
7	4408030028	TOUCHSCREEN EXACTUS PH-RX/M		18	4408031205	KOPFSTÜCK KOMPLETT	
8	4408032303	HALTERUNG EXACTUS 2009		19	4408030115	VENTIL DUTRAL MIT HALTERUNG	
9	4408032603	ANSCHLUSSMUFFE BNC EXACTUS 2009		19	4408030116	VENTIL VITON MIT HALTERUNG	
10	* 4408030531	KOLBENSCHLEIFE 5 L 7 KG		19	4408030117	VENTIL SILIKON MIT HALTERUNG	
10	* 4408031119	KOLBENSCHLEIFE 2 L 5 KG - 2 L 10 KG - 5 L		20	4408030126	MUTTER BEFESTIGUNG ROHR	

* SIEHE ANMERKUNGSBLATT

CODE **57168, 57169, 57170, 57892, 57893, 57894**

BESCHREIBUNG: **PUMPE EXACTUS PH-RX/M**

10	* 4408031121	KOLBENSCHIBE 10 L 5 KG	21	57174R0001	GEHÄUSE EXACTUS
11	* 4408030062	FÜLLSTANDESENSOR MA/MB			

CODE **57168, 57169, 57170, 57892, 57893, 57894**

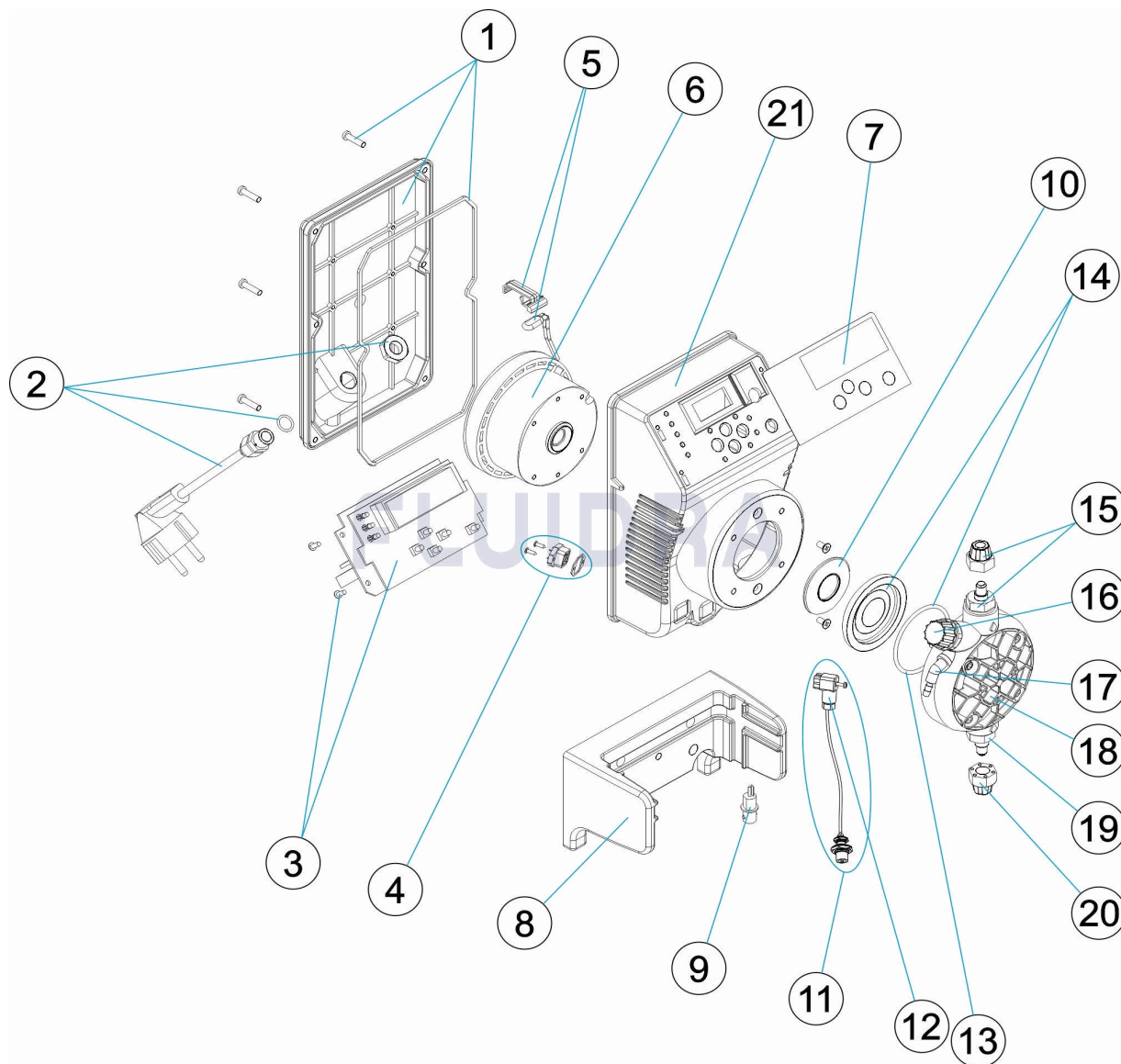
BESCHREIBUNG: **PUMPE EXACTUS PH-RX/M**

HINWEISE

POS	CODE	HINWEISE
4	* 4408031217	FÜR: 57892, 57893, 57894
6	* 4408030118	FÜR: 57168, 57892
6	* 4408031114	FÜR: 57169, 57893
6	* 4408030517	FÜR: 57170, 57894
10	* 4408030531	FÜR: 57168, 57892
10	* 4408031119	FÜR: 57169, 57893
10	* 4408031121	FÜR: 57170, 57894
11	* 4408030062	FÜR: 57892, 57893, 57894
12	* 4408031729	FÜR: 57892, 57893, 57894

CODIGO 57168, 57169, 57170, 57892, 57893, 57894

DESCRIÇÃO: BOMBA EXACTUS PH-RX/M



PORTUGUES

POS	CODIGO	DESCRIÇÃO	JANTIDADE	POS	CODIGO	DESCRIÇÃO	JANTIDADE
1	4408030025	TAMPA TRASEIRA BOMBA EXACTUS		12	* 4408031729	LIGAÇÃO NIVEL	
2	4408031221	CABO ALIMENTAÇÃO		13	4408030111	JUNTA TORICA CABEÇAL	
3	4408032602	CIRCUITO ELECTRONICO PH/RX. 2009		14	4408030119	MEMBRANA COMPLETA	
4	* 4408031217	LIGAÇÃO		15	4408030112	CORPO RACORD + DUTRAL	
5	4408032305	SUPORTE MAIS TERMOSTATO DE 110°		15	4408030113	CORPO RACORD + VITON	
6	* 4408030118	ELECTROIMAN COMPLETO 5L 7KG		15	4408030114	CORPO RACORD + SILICONE	
6	* 4408031114	ELECTROIMAN 5L 10KG		16	4408032308	TAMPÃO PURGA	
6	* 4408030517	ELECTROIMAN 10L 5KG		17	4408031203	RACCORD PURGA	
7	4408030028	PAINEL DIGITAL TÁCTIL PH-RX/M		18	4408031205	CABEÇAL COMPLETO	
8	4408032303	SUPORTE BOMBA EXACTUS 2009		19	4408030115	VÁLVULA DUTRAL + SUPORTE	
9	4408032603	LIGAÇÃO FÊMEA BCN. EXACTUS 2009		19	4408030116	VÁLVULA VITON + SUPORTE	
10	* 4408030531	ANILHA PISTON 5L 7KG		19	4408030117	VÁLVULA SILICONE + SUPORTE	
10	* 4408031119	ANILHA PISTON 2L 5KG - 2L 10KG - 5L 10KG		20	4408030126	PORCA SUJEIÇÃO TUBO	

*** VEJA A FICHA DE OBSERVAÇÕES**

CODIGO 57168, 57169, 57170, 57892, 57893, 57894

DESCRIÇÃO: BOMBA EXACTUS PH-RX/M

10	* 4408031121	ANILHA PISTON 10L 5KG	21	57174R0001	CAIXA BOMBA EXACTUS
11	* 4408030062	SONDA NÍVEL MA/MB			

CODIGO **57168, 57169, 57170, 57892, 57893, 57894**

DESCRIÇÃO: BOMBA EXACTUS PH-RX/M

OBSERVAÇÕES

POS	CODIGO	OBSERVAÇÕES
4	* 4408031217	PARA: 57892, 57893, 57894
6	* 4408030118	PARA: 57168, 57892
6	* 4408031114	PARA: 57169, 57893
6	* 4408030517	PARA: 57170, 57894
10	* 4408030531	PARA: 57168, 57892
10	* 4408031119	PARA: 57169, 57893
10	* 4408031121	PARA: 57170, 57894
11	* 4408030062	PARA: 57892, 57893, 57894
12	* 4408031729	PARA: 57892, 57893, 57894